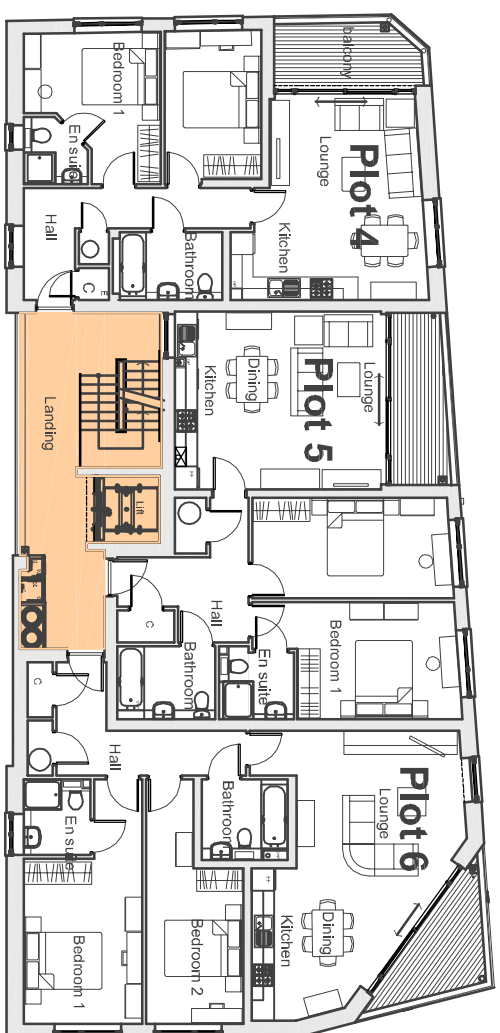
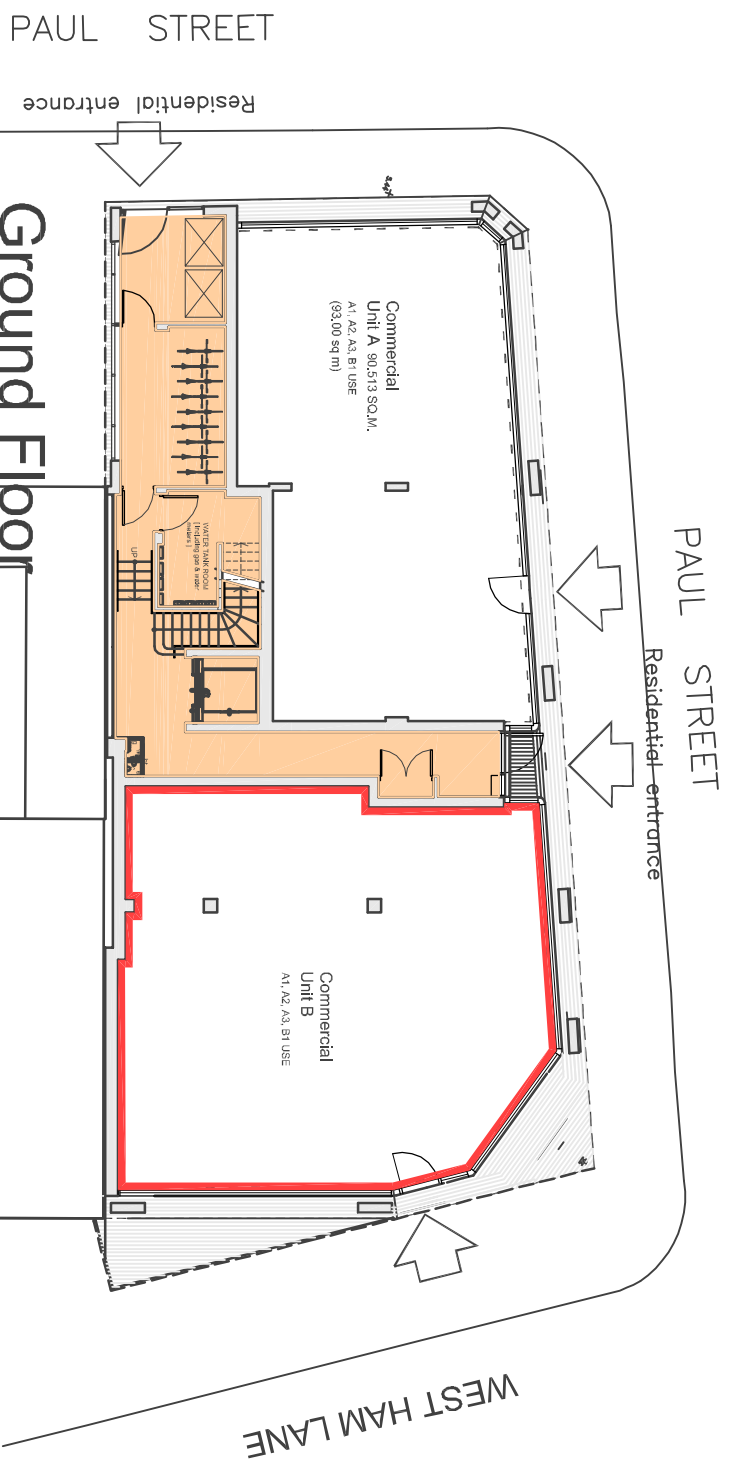




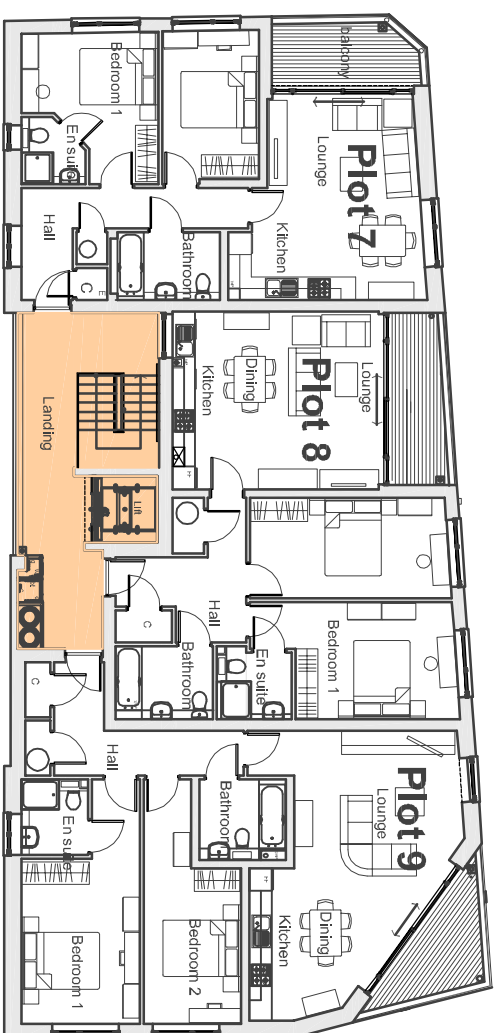
First Floor



Second Floor



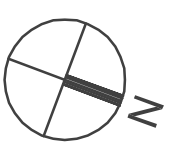
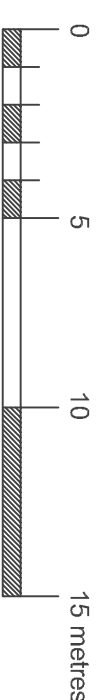
Ground Floor



Third Floor

Residential Common Areas

Gross Internal Floor Area
Unit B - 12221.08 sq ft



| | | | | | | | |
|----------------|--------------------------------------------|-------|----------|------|----------|-------|-----|
| drawing | Conveyance Plan | scale | 1:200@A3 | date | 13.12.10 | drawn | SEF |
| Site Reference | Unit B, xx Paul St, Stratford, London, E15 | | | | | | |